



CONDITION OF LOAN FORM
Condition Report
 (for incoming loans)

REPORT BY: (Theatre of Conservation) Dax
 REASON FOR LOAN: **Temporary Exhibition**

REPORT DATE: 15/07/0002034

Objects of the Misanthropocene, a Time Travelling Exhibition of Insouciant Objects from the Museums of Beyond.

DATES OF LOAN: 20 August 2020-1 October 2021

BORROWING INSTITUTION ADDRESS: **UCL Slade & Institute of Archaeology**

Condition Report composed by Theatre of Conservation as local agent commissioned on behalf of the Illegal Museum of Beyond

~~OBJECT: Grab and run pack~~

ACCESSION NUMBER: Temporary loan number 0011

COUNTRY OF ORIGIN OR CULTURAL GROUPING:

DIMENSIONS (cm): 52x42x13cm

NUMBER OF PARTS: unknown

MATERIALS:

Bone		Fur		Ivory		Textile	X
Ceramic		Gemstone		Leather	X	Wax	
Copper alloy	X	Glass		Plaster		Wood	X
Enamel		Gold		Silver		Unidentified	X
Feather		Horn		Stone		Other metal	X
Fossil		Iron	X	Tar/pitch			
Other:	X - plastic						

CONDITION:

This survival pack is a composite object made with a textile outer layer, beige or white in colour. Several objects are bundled inside the textile layers. X-ray images of the survival pack were taken to provide information about the objects inside. The pack has burn marks on the most of its surface. The fire damage appears to be concentrated at the centre (see Figure 1).

The textile layer has dust and ash all over its surface. There are signs of discolouration, that may have been caused by the fire or burrial. The frayed areas of the textile have burn marks. This indicates that the damage to the textile layers may be caused by the fire and not by burrial. Lens shaped pattern some layer of the textile has a lens shaped pattern. This may be a pattern printed on the textile or lost decorations may have left this pattern on the surface.

Lower right corner of the object has been lost, possibly due to the fire damage. It is possible to examine the layered structure of the object in this area (see Figure 2). This area is severaly damaged by the fire, therefore it is difficult to visually identify all the contents. Application of a small amount of force causes this area to crumble. The identifiable objects in this area are highlighted in Figure 2. Three strips of metal (A in Figure 2) are visible in the top corner of the lost area. From the x-ray, they appear to be utensils (1 in Figure). Next to the utensils, there is a roll of layered and thin sheet material (B in Figure 2), possibly paper or textile. The roll is tied with a ribbon shaped material (C in Figure 2), of about 0.3cm wide. The thickness of the material indicates that it could be rubber or textile. It is possible that some object is wrapped inside this roll. Another metal component, located at the bottom, appears to be some tool like object in the xray (D in Figure 2 and 2 in Figure 6). Above the metal tool, some of the layers of the object has pastic-like texture (E in Figure 2). These layers are somewhat translucent and glossy.

The center of the of the object has the most fire damage. Most of the ash as concentrate in this area. A circular greenish blue disk (I in Figure 3), about 1 cm in diameter is visible in this area. It could be some corroded metal. From the x-ray, several circular disks are present in this area. One of them looks like a button. Therefore it is possible that this area has remains of clothes. Some of the less damaged parts of these layers have denim like texture (II in Figure 3). Part of a soft black rope, about 0.3 cm wide is also visible in this area (III in Figure 3). In the top part of the burned area, remains of 2 black object are present (IV in Figure 3). From the shape and the texture of the burned material, it is possible that they are made of leather and rubber. Due to the presence of clothes and from the appearance of these objects, it is possible that these are the remain of a pair of shoes. The black object on the left is not attached to other parts of the objects. It has some markings on one of its sides (see Figure 4). Above the black objects, part of a greenish blue rope (abobut 0.8 cm in width), is portruding from between the layers of textile (V in Figure 3). This rope possibly made of plastic.

At the bottom edge of the object, part of the rope (similar to the rope mentioned before) is visible (see Figure 5). At the bottom left corner of the object has a more definite shape than the rest of the object. From the x-ray, this corner has an axe shaped object (3 in Figure 5). The x-ray also indicates that additional metal tools are under the axe head (2 in Figure 5). The handle of the axe makes up most of the left edge of the object. The handle is mostly covered by the top textile layer. However, the texture of the exposed part of the handle indicates that it is possibly made of wood (see Figure 4).

The textile left edge of the object has embroidery made with a thread similar in colour to the the textile (see Figure 4). The left edge also has a piece of rope portruding through layers of textile. At the top edge of the object, layers of textile are srunched up. In between the layers, some area of the textile has embroidery (see Figure 7). This area is heaviily soiled.

X-ray of the object revealed more information about the contents of the survival pack. There are 2 tools under the axe head. Near the utensils, the broken zipper is visible (4 in Figure 6). Just above the zipper there is a bunch of needles and a saftey pin (5 in Figure 6). Several other components of the pack are made visible by the x-ray, but they are unidentifiable without further information about the object.

Further analysis and research is needed to identify the materials present in the object. Most of the coponents of the objects require some form of stabilisation to reduce their movement.

The object has active insect infestation. There are spider webs in some areas. Additionally at least one small moth is present in the object.

HANDLING NOTES: The object is fragile and has been placed inside a cardboard tray. It should be moved as little as possible. If it is necessary to remove the object, one of the sides of the tray can be opened. The bottom left corner of the object is much heavier than the rest of the object. The weight distribution of the object needs to be considered while moving it.

ENVIRONMENTAL CONDITIONS:

Should not be displayed in the vicinity of a heating source or direct sunlight.

Light levels (lux) below

UV: below 75 μ W per lumen

Temperature ($^{\circ}$ C): 18-24 \pm 4 in 24 hour period

RH: 40-60% \pm 10% in 24 hour period

ADDITIONAL INFORMATION:

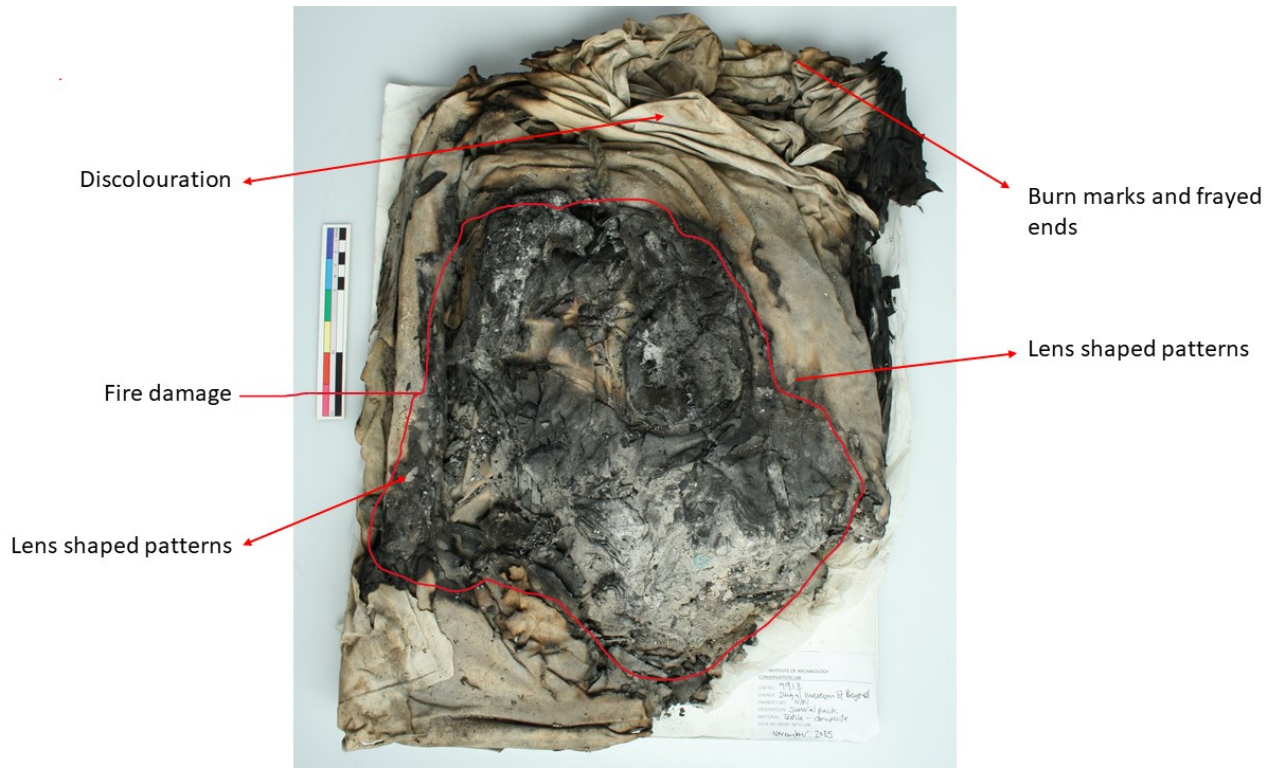


Figure 1: overall condition

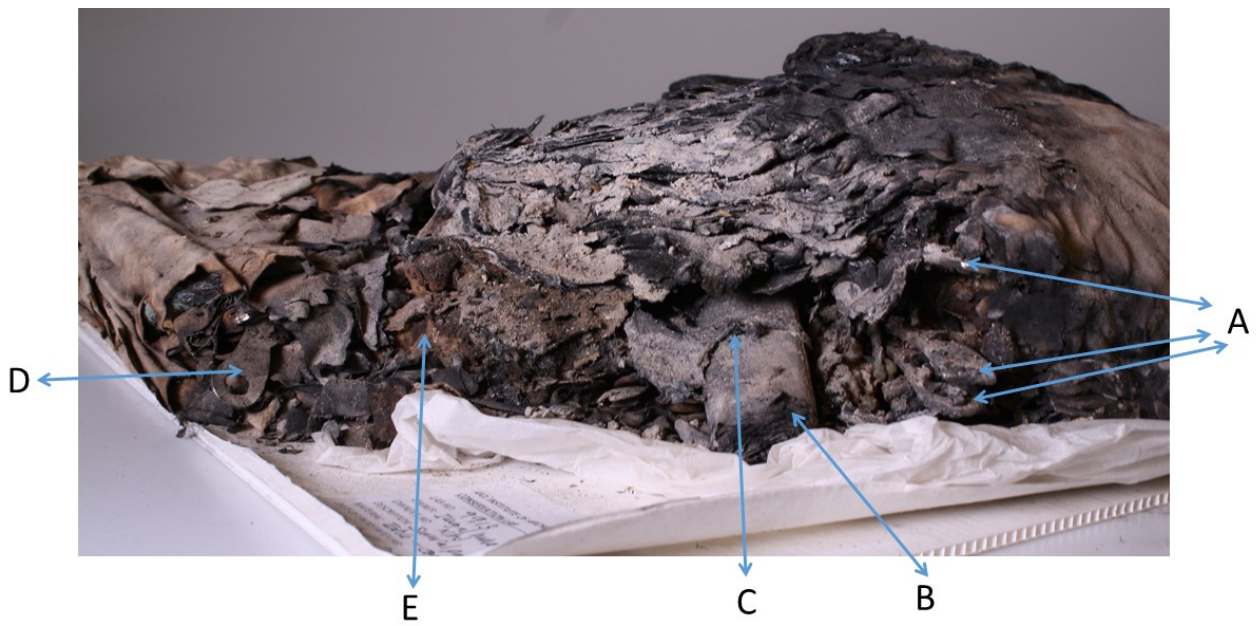


Figure 2: lower right corner

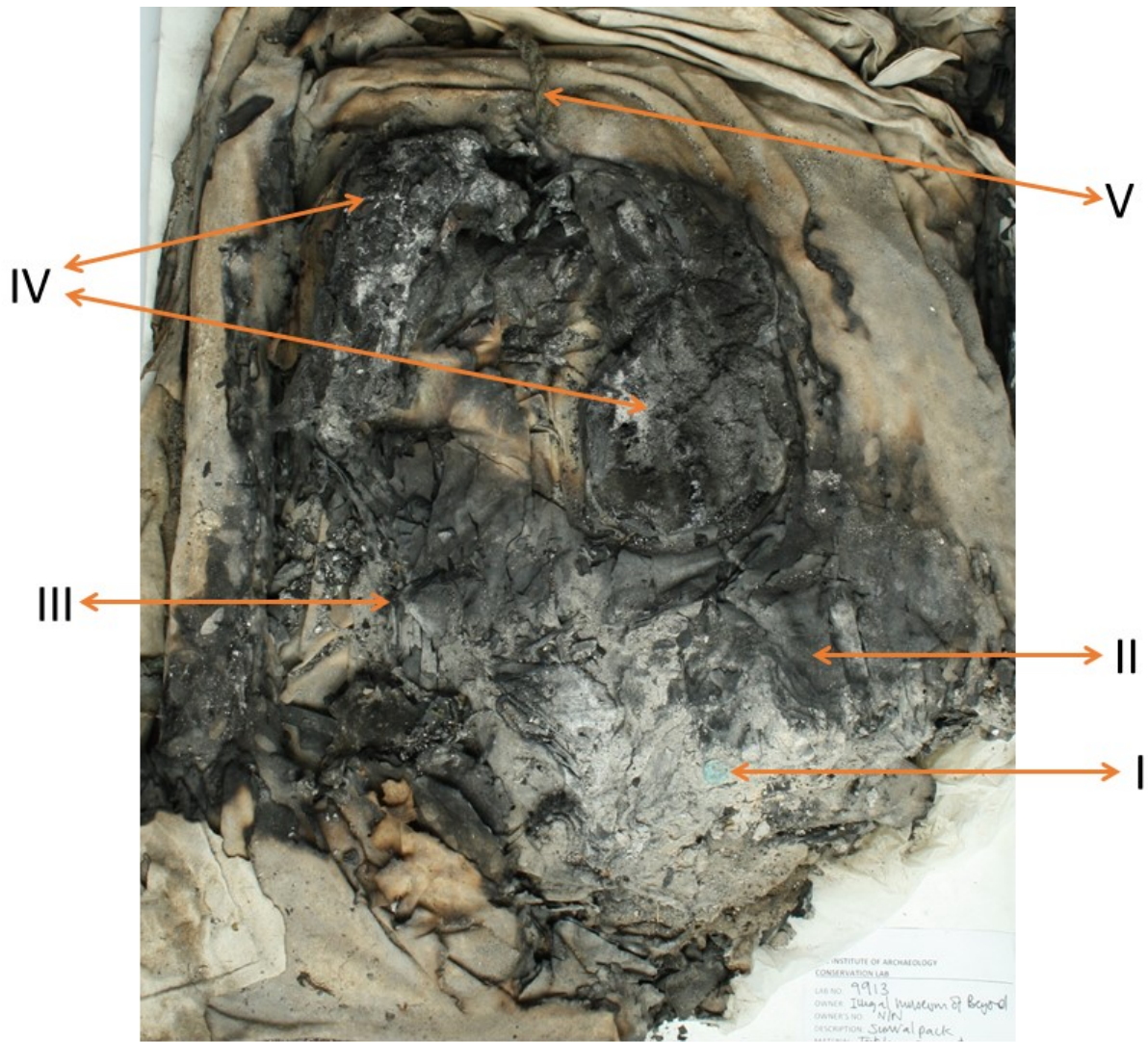


Figure 3: detailed condition issues



Figure 4: left edge



Figure 5: bottom edge

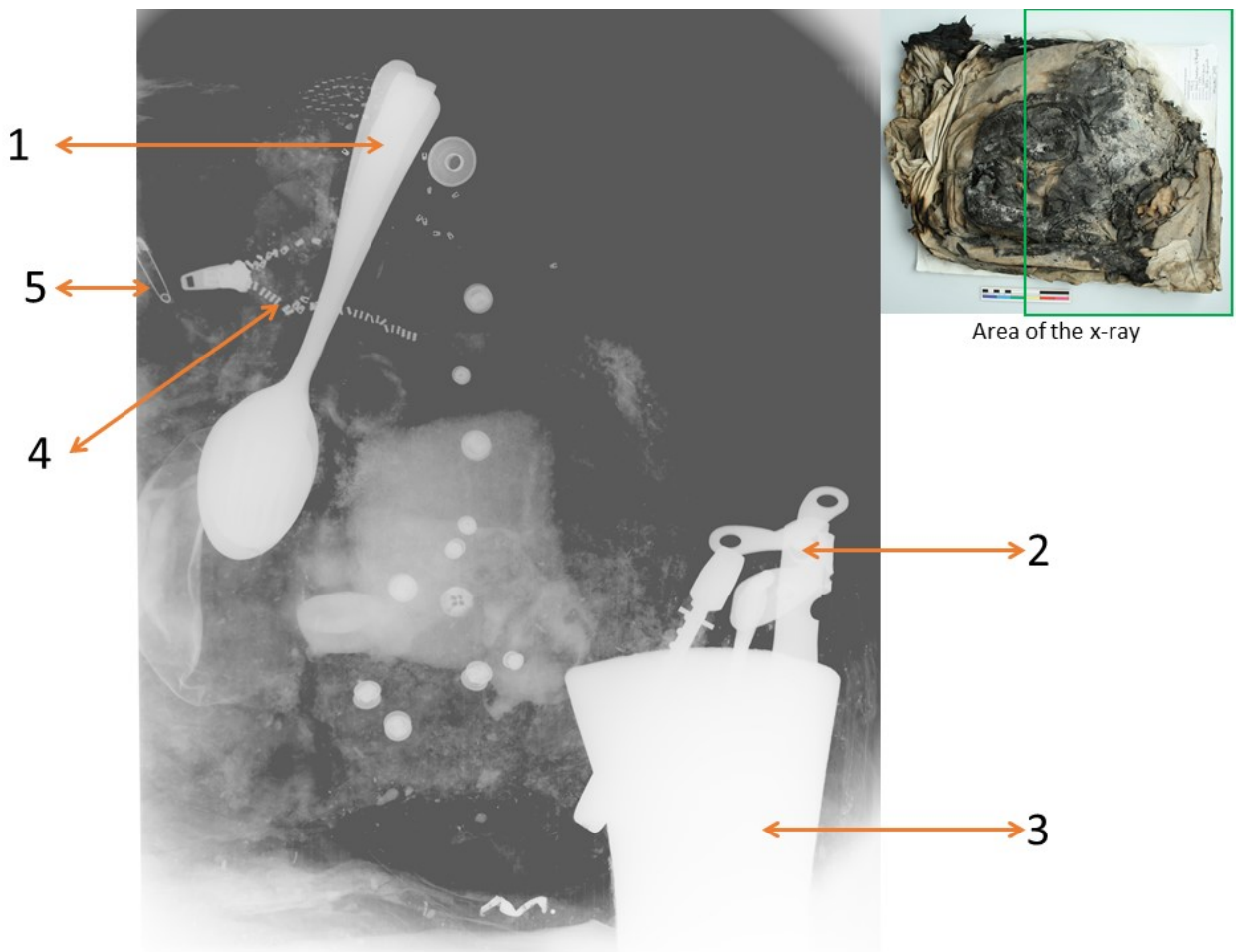


Figure 6: x-ray of the lower half



Figure 7: embroidery on the scrunched up layers at the top edge

Signature on Departure (from MoB)

Representative (name): William. S. Burroughs

Signature: *William Burroughs*

Date: 26 December 1981

Lending institution: MoB

ANY CHANGES IN CONDITION SHOULD BE NOTED.

VENUE:

Arrival

Any change in conditions:

MoB representative (name):

Signature:

Date:

VENUE:

Arrival

Any change in conditions:

Borrowing institution representative (name):

Signature:

Date:

VENUE:

Departure

Any change in conditions:

MoB Representative (name):

Signature:

Date:

VENUE:

Departure

Any change in conditions:

Borrowing institution representative (name):

Signature:

Date:

Signature upon return to MoB

Lending institution: MoB

Date: _____

Representative (name): _____

Signature: _____
