

**CONDITION OF LOAN FORM**  
**Condition Report**  
(for incoming loans)



REPORT BY: (Theatre of Conservation)

REPORT DATE: 15/07/2021

REASON FOR LOAN: **Temporary Exhibition**

**Objects of the Misanthropocene, a Time Travelling Exhibition of Insouciant Objects from the Museums of Beyond.**

DATES OF LOAN: 20 August 2020-1 October 2021

BORROWING INSTITUTION ADDRESS: **UCL Slade & Institute of Archaeology**

**Condition Report composed by Theatre of Conservation as local agent commissioned on behalf of the Illegal Museum of Beyond**

~~OBJECT: Stratotype~~

ACCESSION NUMBER: Temporary loan number 0004

UCL entry number/Lab no. 9923

COUNTRY OF ORIGIN OR CULTURAL GROUPING:

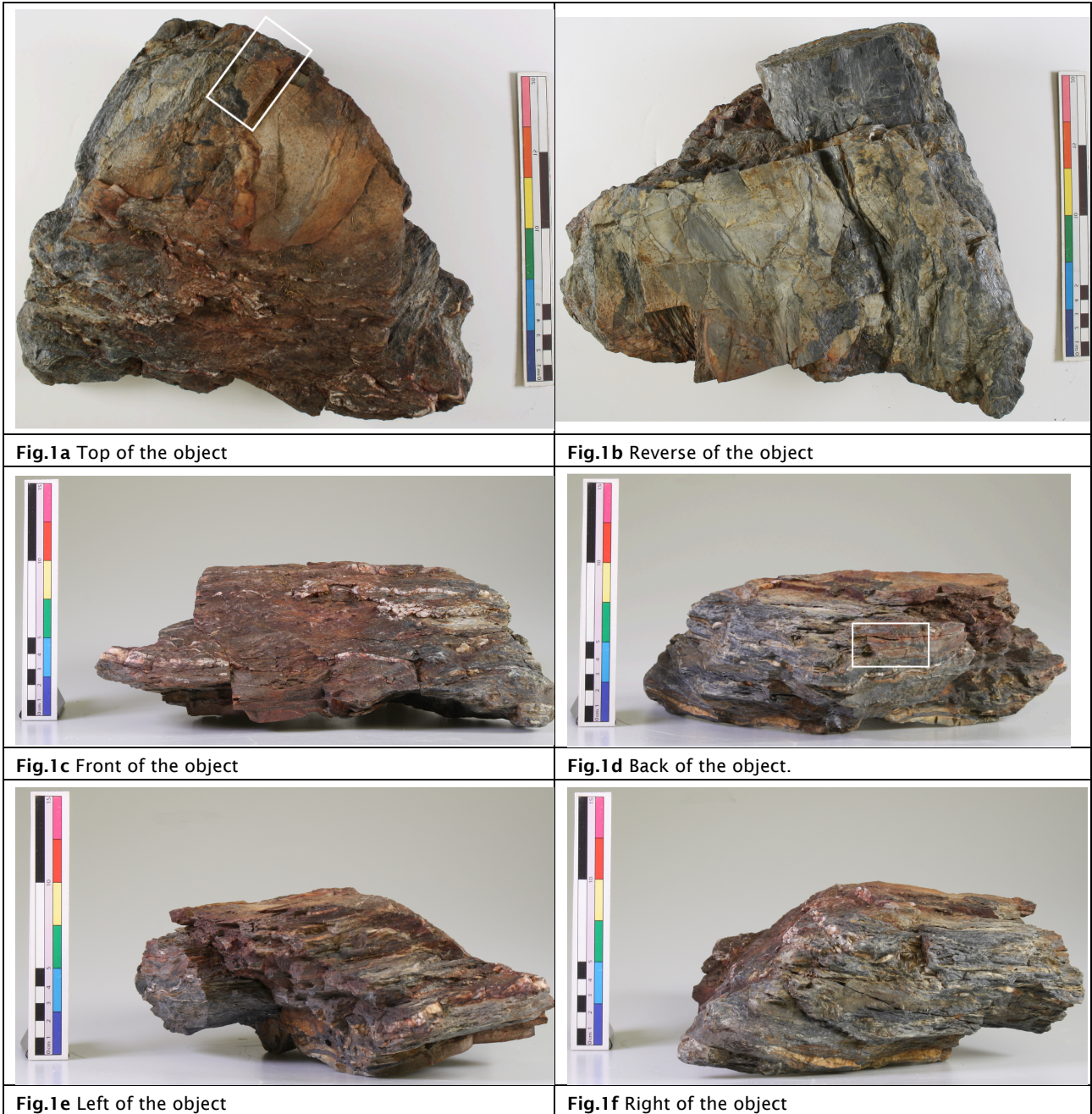
DIMENSIONS (cm): 28cm (Width), 23cm (Depth), 8.5cm (Height)

NUMBER OF PARTS: 1

MATERIALS:

Bone		Fur		Ivory		Textile	
Ceramic		Gemstone		Leather		Wax	
Copper alloy		Glass		Plaster		Wood	
Enamel		Gold		Silver		Unidentified	
Feather		Horn		Stone	✓	Other metal	
Fossil		Iron		Tar/pitch			
Other:							

CONDITION:



**Fig.1a** Top of the object

**Fig.1b** Reverse of the object

**Fig.1c** Front of the object

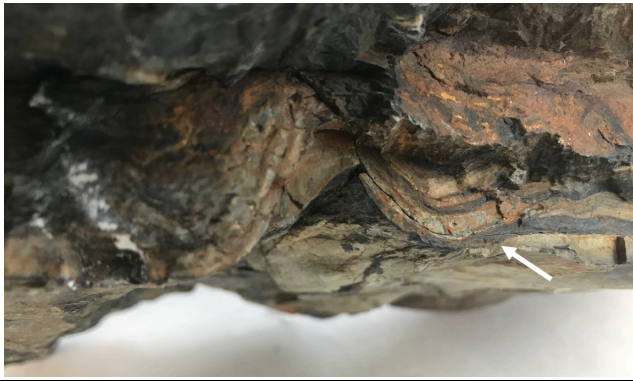
**Fig.1d** Back of the object.

**Fig.1e** Left of the object

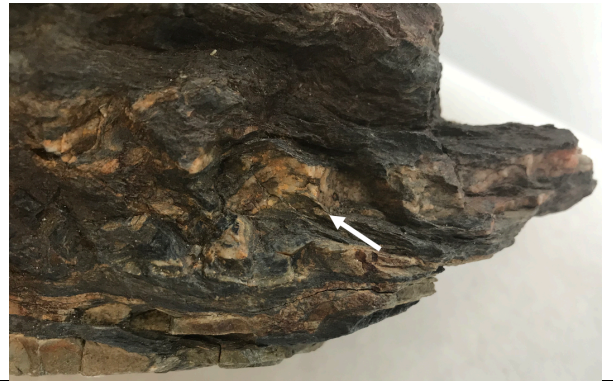
**Fig.1f** Right of the object

The object is a foliated, layered metamorphic rock specimen with fine to medium-grained, thin to medium thickness (1-10mm), continuous bands of various colours including red, white, dark greenish grey, grey and yellowish brown (Fig.1 a-f). Matt, wavy or wrinkled foliation (Fig.2a-b) and areas of fine-grained grey on the surface of the top of the object with sheen is observed, suggesting presence of mica (Fig.3). Concentration of white, opaque and shiny crystals of slaty cleavage (likely to be quartz) with a hint of reddish brown or pink, is observed along the breaking surface from the parent rock, contrasting to the dark bands (Fig.1 a,3). Sharp, angular and straight edges on the various sides and the existing cracks suggests that it tends to break into flat pieces (Fig.4). Possessing both features of phyllite and schist, the object is an intermediate between the two categories. Among the many layers, it is suspected that a grey, chalky layer of approximately 1mm thick, is found to be composed mostly of cement, suggesting remains of a megacity (Fig.1d,5,8). Long cracks are observed in various areas as indicated by white arrows (Fig.6-8). A loose piece, indicated by a white rectangle in Fig.1a and 6, is observed on the top of the object. Debris of lichen and moss were observed on its rough surface (Fig.9).

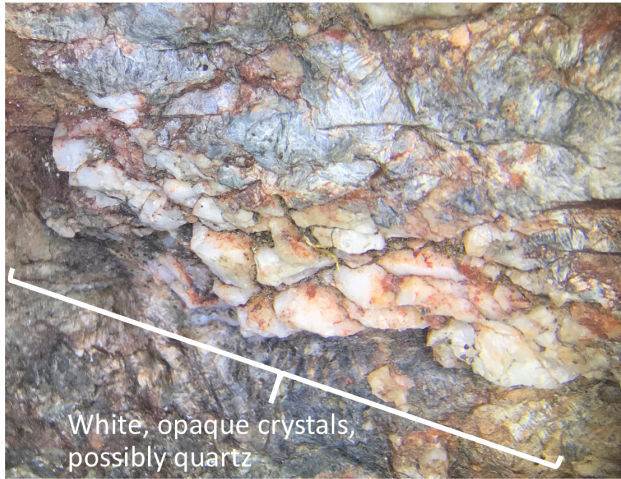
On the surface of the rock specimen, there are a considerable number of yellow plant fibers attached to the rock, as well as white particles and some dark brown unknown deposits (probably lichen). The bottom of the rock is slightly flaky.



**Fig.2a** Wavy, or even wrinkled foliation (white arrow)



**Fig.2b** Wavy, or even wrinkled foliation (white arrow)



**Fig.3** Fine-grained, grey areas with sheen and exposed white shiny crystals at the breaking edge from parent rock on the top of the object. The sheen is possibly due to presence of mica and the crystals possibly quartz.



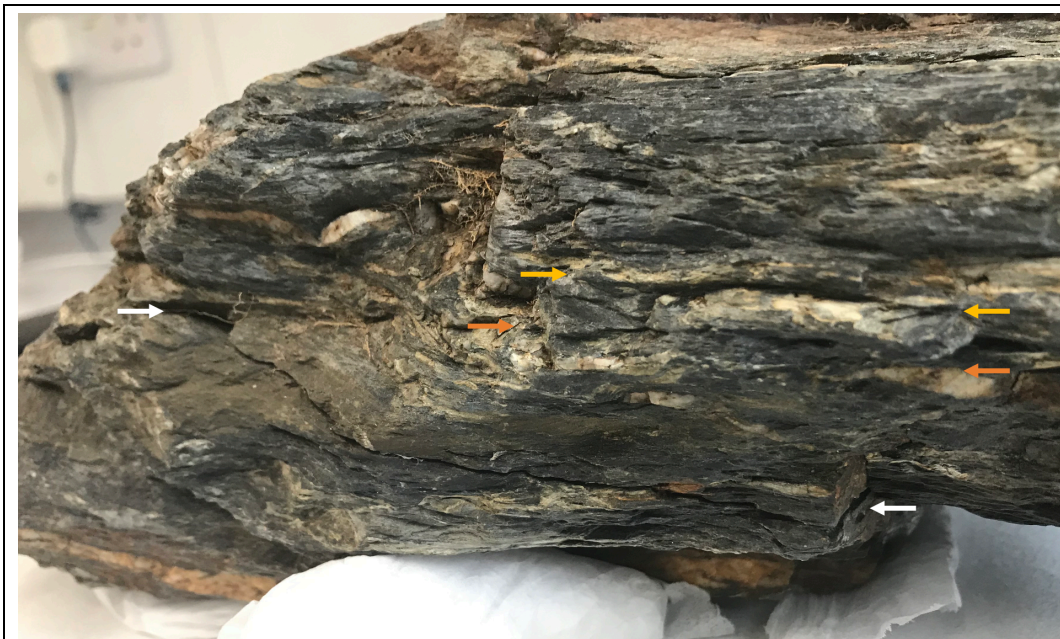
**Fig.4** Fine straight hairline crack, sharp and straight breaking edges. Indicating the tendency to break into flat pieces



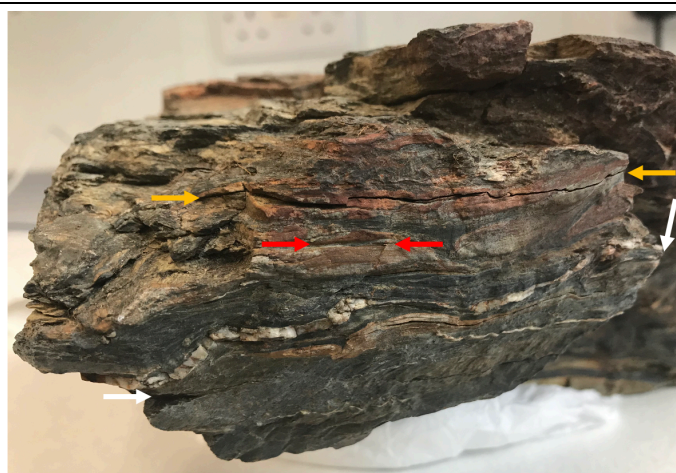
**Fig.5** Close-up of Fig.1d (white box). A 1 mm layer of grey chalky layer, composed mainly of cement, is possibly remains of a megacyst (red arrows).



**Fig.6** Long cracks (white arrows) and a loose piece (white rectangle).



**Fig.7** Long cracks indicated by pairs of arrows of white and yellow and orange.



**Fig.8** Long cracks (white and yellow and orange arrows in pair) and presence of a cement layer, possibly a megacity (red arrows).



**Fig.9** Close-up of the right-hand side of the object. Long cracks indicated by white arrow. Remains of lichen and mosses circled in yellow.

#### HANDLING NOTES:

Extra care should be taken in handling the object to avoid further deepening of the cracks or the loose piece detaching from the object.

#### ENVIRONMENTAL CONDITIONS:

Should not be displayed in the vicinity of a heating source or direct sunlight.

Light levels (lux) below

UV: below 75  $\mu\text{W}$  per lumen

Temperature ( $^{\circ}\text{C}$ ): 16-22  $\pm$  4 in 24 hour period

RH: 45-55%  $\pm$  10% in 24 hour period

#### ADDITIONAL INFORMATION:





---

---

**Signature on Departure (from MoB)**

Representative (name): William. S. Burroughs

Signature: *William Burroughs*

Date: 26 December 1981

Lending institution: MoB

---

---

ANY CHANGES IN CONDITION SHOULD BE NOTED.

**VENUE:**

Arrival

Any change in conditions:

MoB representative (name):

Signature:

Date:

**VENUE:**

Arrival

Any change in conditions:  
See traced changes.

Borrowing institution representative (name):  
Nicole Zhou

Signature: Nicole Zhou

Date: 30/07/2021

**VENUE:**

Departure

Any change in conditions:

MoB Representative (name):

Signature:

Date:

**VENUE:**

Departure

Any change in conditions:

Borrowing institution representative (name):

Signature:

Date:

**Signature upon return to MoB**

Lending institution: MoB

Date: \_\_\_\_\_

Representative (name): \_\_\_\_\_

---

Signature: \_\_\_\_\_

---